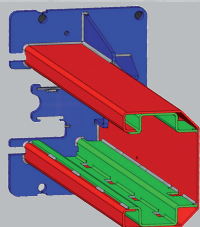


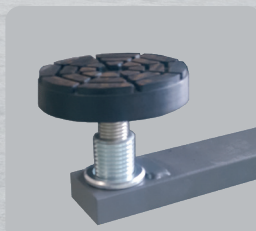
PDCH 450C B PDCH 350C B



Electro-hydraulic two post lifts with base connection for low ceiling height



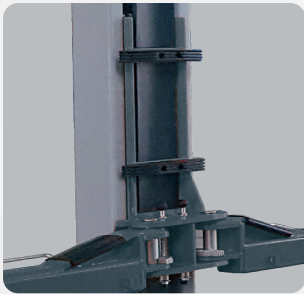
Internally reinforced column structure for little bending and internal cable guiding



Double threaded lifting pad to ensure excellent vertical adjustment (95÷180 mm)

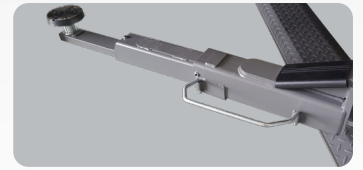


Realignment of the two carriages using metal cables that guarantee **excellent synchronisation**.



PROTECTIONS

Rubber door protections. **Toothed sector** arm rotation stop system



ARMS

Four three-section asymmetrical arms.

Last section of arms very thin (30mm), for easy access to flat vehicles.

INCLUDED ACCESSORIES

- Mechanical carriage support device on each column ensures optimum working safety
- Two set of extension pads.

OPTIONAL ACCESSORIES



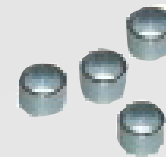
8-43300014

Set of 4 extension for pads, H=80 mm



8-43300015

Set of 4 extension for pads, H=140 mm



8-43300021

Set of 4 extension for pads, H=35 mm



8-43300016

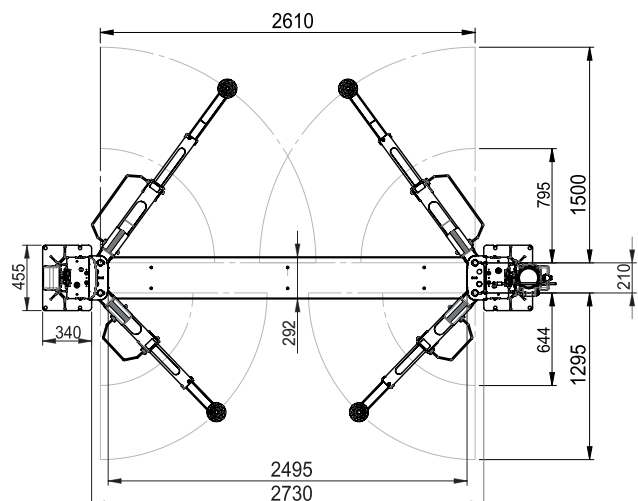
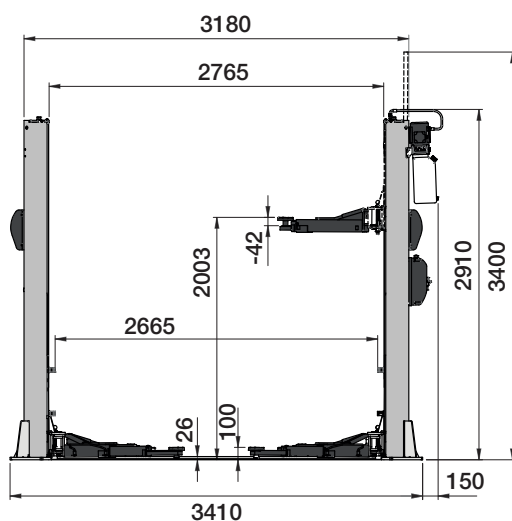
Set of 4 adapters for Mercedes Sprinter

See separate catalogue for further accessories.

TECHNICAL DATA

Model	<i>PDCH 45C B</i>	<i>PDCH 35C B</i>
Lift capacity	4500 kg	3500 kg
Lifting time	40 s	
Three phase motor	400/230V - 3kW - 3Ph - 50/60Hz	
Single phase motor	230V - 3kW - 1Ph - 50/60Hz	
Max. lifting height	2003 mm	
Lift minimum height	115 mm	

DIMENSIONS



The manufacturer reserves the right to modify the features of its products at any time.

Cod. DPSC000657_05/2024



NEXION SPA - ITALY
www.sice.it - sice@sice.it



Designed in
ITALY